

寿司

Sushi



すし岩 Sushiwa

10 min walk from Kyoto st.
Open 12-14 (LO),
17-22 (LO)
Close on Mondays



彦八 Hikohachi

10 min walk from Gion 祇園
Open 11:45-14:00 (LO)
17:00-22:30 (LO)
Close on Mondays



魚心 Uoshin

550 m from Kawaramachi st.
Open 11:30-22:30 (LO)
22:00 (LE)
7 days



にぎり長次郎

Nigiri Chojiro
4 locations in Kyoto
relatively in suburb
Open 11 - 15, 17-23 (7days)



You can go up to as expensive sushi as possible but recently I found Sushi Chojiro, although it is a kaiten sushi, has the best value and fun for money including atmosphere and level of service - perhaps I would go here five times before going to a more expensive authentic place

懐石料理, 京料理

Kaiseki ryori & Kyo ryori



下鴨茶寮

Shimogamo-saryo
Next to Shimogamo-jinja shrine, 600 m from Demachi-yanagi st.



神泉苑平八

Shinsen-en Heihachi
650 m from Nijo station
Open 11 - 20 (LO)



光琳

Korin
650 m from Kawaramachi st.
Open 17:30 - 21:40 (LO)
Close on Sundays



枝魯枝魯ひとしな

(くずし割烹)
Guiloguilo Hitoshina
(casual Kyoto)
800 m from Kawaramachi st.



I'm sure you know many more from Michelin and other sources but these are what I like also from its quite location. Shimogamo-saryo is just next to Shimogamo-jinja shrine (World Heritage site). Shinsen-en Heihachi is in a magnificent ancient Japanese garden, and so on...

牛肉

Beef



モリタ屋 Moritaya

Shijo-Inokuma 四条猪熊,
Kiyamachi 木屋町,
JR Kyoto 京都駅,



京の焼肉処 弘

Yakiniku Hiro
10 branches incl. Gion 祇園
Yasaka 八坂, Ponto-cho 先斗町, and Kyoto station



市場小路 Ichiba-koji

Kitaaji st. 北大路駅,
Teramachi street 寺町通, Shijo
Karasuma 四条烏丸, and JR
Kyoto 京都駅



かごの屋 Kgonoya

(shabushabu, Japanese)
4 branches incl. 北野白梅町
Kitano Hakubai-cho & Shijo-
Karasuma 四条烏丸



すき焼き炭火居酒屋 北斗

Hokuto (sukiyaki izakaya)
550 m from Kyoto station
Open 17:00- 23:00 (LO)
(7days)



There are several ways to enjoy beef from michelin starred ones to high-ends (e.g. Hiro and Moritaya), casual restaurants (e.g. Ichiba-koji), izakayas specializing beef (e.g. Hokuto), and family restaurants (e.g. Kagonoya), depending on your group preference and budget

鶏, 焼き鳥

Chicken, Yakitori



鳥せい本店 Torisei Honten

550 m from Momoyama-goryomae st. 桃山御陵前
Open 11:30 - 23:00 (Tu-Su)



上七軒 鶏料理 なが田

Nagata @Kamishichiken
200 m from Kitano-temmangu shrine 北野天満宮
17:00-22:30, Close on Thu



とりと Torito

3 branches in downtown
(川端丸太町, 四条烏丸,
河原町三条)
17:30-23:00 (LO)



馬耳東風

Bajitoufu
1 min from Shijo 四条 st.
18-23:30 (LO), close on Sun



Nagata-san has been doing chicken over 50 years now. Since I first came here, I haven't felt like going to other yakitori / chicken restaurants. Torisei at Fushimi, a former sake celler, is also recommended for the variety of yakitori and sake.



おばんざい

Obanzai (traditional Kyoto home made dishes)



Obanzai is a traditional Kyoto home made cuisine accompanied with rice, Japan's staple food. Ingredients include local "Kyo-yasai" vegetable, beans and seaweed, fish, and less frequently meats. These are just a few examples among hundreds in Kyoto.



お料理 めなみ

Menami

200 m from Sanjo 三条 st.
17:00 - 23:00
Close on Sundays



よし田 Yoshida

600 m from Shijo 四条 st.
18 - 23, close on Sun/Mon
(run by sister of CEO of
Yoshida Sauce)



飯 いしかわ

Okazuya Ishikawa

350 m from Shijo 四条 st.
17:30 - 24:00 (23:00 on Sun)



都野菜 賀茂

Miyako-yasai Kamo

Shijo-karasuma 四条烏丸
Kawaramachi 河原町
Kyoto station 京都駅前



茉莉花(薬膳おばんざい)

Jusmin (medical herb)

450 m from Uji st. 宇治駅
11:30-15:30, 18-21:30 (Fr-Su), 11:30-15:30 (We-Th)

和食全般

Washoku/Japanese all combined



If you cannot decide what kinds of Japanese, your group members have different preferences, and/or you want to try a little bit of everything, below are the list of places you could visit



がんこ高瀬川二条苑

Ganko TakasegawaNijo-en

350 m from 京都市役所前
Kyoto-shiyakushomae st.
Kaiseki, suishi, beef, crab



かごの屋 Kgonoya

(shabushabu, Japanese)
4 branches incl. 北野白梅町
Kitano Hakubai-cho & Shijo-
Karasuma 四条烏丸



和食NOWジョイ

Washoku NOW Joy
Two in the city including the
one near Kinkakuji 金閣寺
11:00 - 23:00



ごはんや蜃気楼

Gohan-ya Shinkiro

@宮川町 900 m from
Kawaramachi st. 河原町駅
11:30-14:30, 17:30-23 木休



ラーメン/拉麺

Ramen



Tenten-yu and Tenka Ippin soups are what Kyoto people typically love, whereas Iroha, Shinpuku-Saikan, and Murasaki are what I like for its simple soy sauce flavor. TowZen for it's gentle soup, Monsen for it's fusion with sake lees, Gogyo for its burnt soups are great invention.



京都五行 Kyoto Gogyo

550 m from Shijo-Karasuma
四条烏丸 11:30 - 14:30, 17:00
- 22:30 burnt broth of miso
or soy sauce flavor



麺家いろはMen-ya Iroha

@Ramen-koji 拉麺小路 on
10F of Isetan 伊勢丹 Kyoto st.
Open 11:00 - 22:00
Soy-sauce and fish based



新福菜館本店

Shinpuku Saikan Honten
500m from Kyoto station
Open 9 - 22, Close on Wed
Soy-sauce based



天天有 Tenten-yu

In downtown, 四条烏丸 Shijo-
karasuma (- 22:30) and 祇園
Gion (- 4 am), chicken based,
potage like



天下一品総本店

Tenka Ippin (HQ)
900 m from 一乗寺 Ichijoji st.
11 - 3 am, close on Thu
chicken based, potage like



豆乳ラーメン豆禅TowZen
(Vegan Soymilk ramen)

1.3 km from 一乗寺 Ichijoji st.
11:30 - 14:30, 18:00 - 21:30,
Close on Thursdays



門扇 伏見酒蔵店

Monsen (sake lees flavor)
600 m from Momoyama-
goryomae 桃山御陵前 st.
11:30 - 23:00, close on Tue



京都千丸しゃかりき

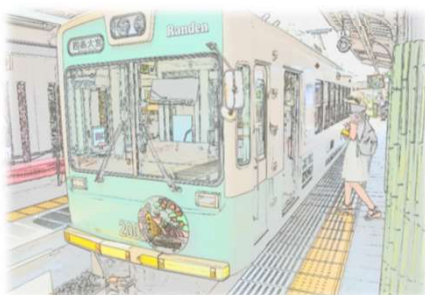
Kyoto Senmaru Shakariki
Murasaki @Kyoto Tower
SANDO Food Hall (B1F)
11 - 22:30, soy sauce based



京都拉麺小路

Kyoto Ramen Koji
10F of Isetan 伊勢丹 Kyoto st.
Open 11:00 - 22:00
9 ramens around Japan

© 2018 Kyoto Travel & Design Office



日常・庶民の日本食 (1000円以下) Daily, easy, healthy, and <1000 yen Japanese



やよい軒 Yayoi-ken

7 locations in downtown
24 hrs (四条烏丸, 二条, 三条)
5 - 2 am (烏丸御池, 京都駅)
7 - 23 (other places)



街かど屋 Machikado-ya

Kawaramachi-Sanjo and
Karasuma-Gojo
河原町三条 & 烏丸五条
24 hours



大戸屋 Oto-ya

Nishiki-koji 錦小路
(11:00 - 22:00)
& Sanjo-Kamogawa 三条鴨川
(11:00 - 23:00)



あぶり 杭之蔵

Aburi Motonokura
190 m from Shijo st. 四条駅
7:00 - 10:00, 11:30 - 14:30,
17:00 - 22:30



迅速・低価格な日本食(500円前後) Quick and low-cost Japanese (≒500 yen)



吉野屋 Yoshinoya

(breakfast menu available)
3 locations in downtown
5 more in a wider area
8:00 - 23:00 or 24 hr



松屋 Matsuya

(breakfast menu available)
3 locations in downtown
6 more in a wider area
Mostly open 4 hours



なか卯 Nakau

(breakfast menu available)
10 locations in downtown
10 more in a wider area
Mostly open 24 hours



MOS BURGER

(rice/yakiniku/tempura
burger + regular ones)
5 locations in downtown
5 more in a wider area
Typically 7:00 - 23:00



Eat-in at convenience stores

Some Seven Eleven, Family
Mart, and Lawson stores
offer eat-in space

日本酒など Sake and others



京都酒蔵館

Kyoto Shuzo-kan
250 m from Shijo 四条 st.
12:00 - 22:00 (LO)



伏見酒蔵小路

Fushimi Sake Village
600 m from Momoyama-
goryomae 桃山御陵前 st.
11:30 - 23:00, close on Tue



日本酒食堂しずく

Nihonshushokudo Shizuku
500 m from Karasuma-oike
地下鉄烏丸御池 station
Mon-Sat: 11-14, 16-24
Sun: 15-23



Bar SHINPI

@miyagawacho 宮川町
900 m from Kawaramachi
阪急河原町 station
21:00 - 24:00, close on Sun



上七軒ビアガーデン Kamishichiken beer garden

17:30-21:30 (LO)
Jul 1 to first week of Sep

ジビエ〜羊, 猪, 馬 & ホルモン

Jibie〜lamb, wild boar, horse



アジェ松原本店

Aje (Matsubara HQ)
650 m from Kawaramachi st.
阪急河原町駅
Open 18:00 - 24:00



羊食堂 Hitsuji shokudo (lamb)

650 m from 四条烏丸駅 Shijo-
Karasuma st.
Open 17 - 23, close on Tue



ひごろっか(九州&馬肉)

Higorokka (horse)
250 m from 阪急西院駅
Hankyu Saiin station
Open 17:00 - 24:00



畑かく (猪肉)

Hatakaku (wild boar)
230 m from Kuramaguchi st.
地下鉄鞍馬口駅
12:00 - 21:30 close on Mon



菜食主義、純粋菜食主義、&無麩質主義 Vegetarian, vegan, and gluten free



CHOICE(gulten free/vegan)
In front of Sanjo station
地下鉄三条駅前
Open 8:30 - 15, 17- 20:30
8:30 - 20:30 (Sat/Sun)



Falafel Garden
(cafe w/good view of river)
160 m from 京阪出町柳駅
Keihan Demachiyanagi st.
11:00 - 21:30



豆乳ラーメン豆禅 TowZen
Vegan Soymilk ramen
1.3 km from 一乗寺 Ichijoji st.
11:30 - 14:30, 18:00 - 21:30,
Close on Thursdays



菜食 光兔舎 (vegetarian)
Saishoku Kousagisha
400 m from Ginkakuji-michi
銀閣寺道 bus stop
12 - 18, close on Mo/Tu



山食音 (vegen)
Yamashoku-on
600 m from 京阪出町柳駅
Keihan Demachiyanagi st.
12-15, 18-20:30 CL Tu/We



Organic House Salute
(vegetarian)
700 m from Kyoto station
11:30-14:30, 17:00-18:45
Close on Wed/Thu



バイタルサイン
Baitarusain (vegetarian)
400 mi from 阪急河原町駅
Hankyu Kawaramachi st.
Open 18 - 23, close on Tue



mumokuteki cafe
(vegetarian)
550 m from 阪急河原町駅
Hankyu Kawaramachi st.
11:30 - 20:00, close on Wed



外国料理 Foreign foods or Kyoto/Japan modifications



太陽カレー
Taiyo Curry
100 m from 阪急西院駅南口
Hankyu Saiin st. South exit
11:00 - 14:30, close on Sun



カマル Camal (Indian)
350 m from 烏丸御池駅
subway Karasuma-Oike st.
11:30 - 15:00, 17:00 - 22:30
(7 days)



大鵬 Taiho (Chinese)
350 m from JR/地下鉄二条駅
JR/subway Nijo station
11:30 - 14:30, 17:30 - 22:00
Close on Tuesdays



龍門本店 (四川Sichuan
Chinese) **Ryumon honten**
270 m from 地下鉄東山駅
subway Higashiyama st.
17:00 - 5:00 am (7 days)



ピニョ食堂 (Korean)
Pinyo shokudo
5 min from Sanjo三条 st.
11:30-14, 17:30-21:30 (LO)
Close on Thursdays



四条パクチー
Shijo Pakuchi (Thai)
400 m from 四条烏丸交差点
Shijo-karasuma intersection
11:30 - 15:00, 18:00 - 22:30



イーサン E-san (Thai)
80 m from 地下鉄今出川駅
subway Imadegawa st.
11-14:30 (15 Sa/Su), 17-22
Close on Tuesdays



ビカポロンツァ
Pikapolonca (Slovenia)
650 m from JR花園駅
Hanazono st.
12-15, 18-21, close on Mon

© 2018 Kyoto Travel & Design Office

